

OUTDOOR AMENITY

# LED SENTINEL



Tel: 01208 79524

Fax: 01208 72832

info@fitzlight.co.uk

[www.fitzlight.co.uk](http://www.fitzlight.co.uk)

**Fitzgerald**<sup>FL</sup>  
Lighting your world

Fitzgerald Lighting (Cornwall) Limited, 38 Normandy Way, Bodmin, Cornwall PL31 1EX

# LED SENTINEL

## OUTDOOR AMENITY LUMINAIRE

**Fitzgerald**<sup>FL</sup>  
www.fitzlight.co.uk

The Sentinel is a robust and versatile wall mounted luminaire constructed from vandal resistant diecast aluminium and polycarbonate diffuser.

The Sentinel can be supplied with a large variety of outputs to compliment existing technology.



### Applications:

- Security and general access
- Architectural features
- Exterior lighting
- Footpaths
- Tunnels
- Under canopy applications
- Building perimeters

### Product Specifications:

- Ingress protection to IP65
- Constant output driver with colour 850 as standard
- 20mm conduit entry points on back and sides allowing maximum flexibility for mounting
- Vandal resistant diecast aluminium body with UV stabilised polycarbonate diffuser
- Black as standard  
- white not available
- Flush mounting to prevent fitting being levered away from the wall.
- Easy installation/maintenance
- Captive fixings and rugged construction for a long service life
- All gaskets are manufactured from heat resistant silicone rubber to ensure the IP65 rating

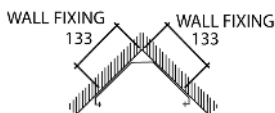
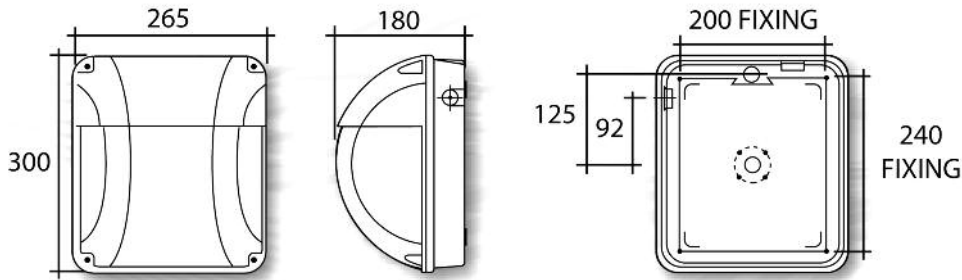
### Optional Accessories:

- SNT/CBI:** Internal corner bracket  
**SNT/CBE:** External corner bracket

Occupancy and daylight sensor options available on this product

# LED SENTINEL OUTDOOR AMENITY LUMINAIRE

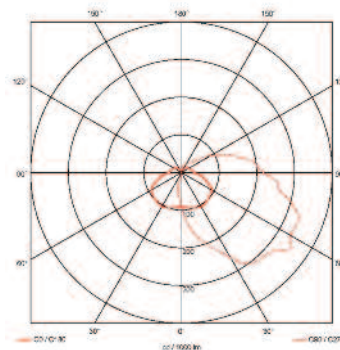
**IP65**



Internal Corner Bracket



External Corner Bracket



**Polar Curve:**  
Photometric data is available online for dialux and relax.

## Order Codes

LED Sentinel	Lumens	Watts	Length	Width	Height
SNT12/CO/BK/850	1340	12	300	265	180
SNT17/CO/BK/850	1985	17	300	265	180
SNT20/CO/BK/850	2792	20	300	265	180
SNT30/CO/BK/850	3598	30	300	265	180
SNT40/CO/BK/850	4466	40	300	265	180

Test on SNT40/CO/BK/850 gave a result of 3632 luminaire lumens which delivers 81% light output ratio.

## LED Sentinel part code formula example:

Product Family	Watts	Gear Option	Optional Feature	Colour Temp	Emergency Option
SNT	30	DL	BK	850	M3

### Gear Options:

**/AD:** 1-10V Analogue dimming

**/DL:** Dali addressable dimming

### Emergency Options:

**/LS3:** 3hr sustained emergency

**/M3:** 3hr maintained emergency

### Colour Temp Options:

**/830:** Colour 830

**/840:** Colour 840

### Installation options:

Exposed T NO

Plasterboard NO

Metal Pan NO

**Surface YES**

Suspended NO

**TYPICAL ENERGY SAVINGS**  
Compared performance over 50,000 hours

**Standard Technology**  
**70 Watt MBI**  
86 Circuit Watts  
Luminaire Lumens 3472  
Lamp Maintenance, 10,000 Hours  
4300 K/Watts  
**Total energy cost @ 11p-kwh = £473.00**  
Plus 5 new lamps

**LED Sentinel**  
SNT40/CO/BK/850  
40 Circuit Watts  
Luminaire Lumens 3632  
Lamp Maintenance, 50,000 Hours  
2000 K/Watts  
**Total energy cost @ 11p-kwh = £220.00**  
**No Lamp Maintenance**

**ENERGY SAVINGS**  
**54%**

**TOTAL SAVINGS**  
**£253.00**